



PRIMEX®



WATER AND WASTEWATER
CONTROL SOLUTIONS
PRODUCT SHOWCASE

www.primexcontrols.com

ACCEL[®] PANEL PROGRAM

- Pre-engineered base models
- Same day quotes
- Self-service quote tool
- 24 hour submittals
- 10 day delivery

(Due to supply chain and labor constraint issues, lead times are as quoted and subject to change based on availability.)



331-SV PANEL

- 3 phases, 3 voltages, 1 panel
- Padlockable wall mount NEMA 4X stainless steel enclosure
- Single-point power connection
- IEC HP rated motor starter with adjustable "Fit and Click" overload modules
- 10HP max @ 208V, 240V
20HP max @ 480V
- Class 10 ambient compensated overload relay
- Pump short circuit disconnect/overload reset accessible through inner door
- Tri-voltage step-down control transformer
- Separate alarm/control fuses
- Override circuit to operate lag pump if lead float fails
- Station View™ Controller
- Pump run lights, Hand-Off-Auto switches
- Optional Level Sensor Kits
 - Submersible level transducer with (2) backup floats, 50 ft. cables
 - (4) mechanical floats with cable weights, 50 ft. cables



RAPID SET™ SYSTEM

- Reduce on-site installation time
- Consistent appearance to installation
- Compact footprint
- Stainless steel construction to prevent corrosion
- Control panel factory installed
- Additional mounting space for other electrical components
- Standard 122 mph wind rating
- Optional design for 200 mph wind rating
- Sloped top acts as a sunshield and protects equipment and operators from weather
- 2-year limited warranty



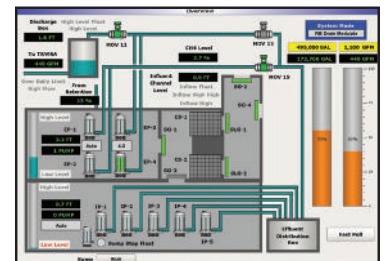
ARC ARMOR® ENCLOSURE

- Patented enclosure design manufactured by an ISO 9000 certified company
- Reduces exposure to arc flash with multiple compartment design and single wall construction
- 304L stainless steel construction (wall mount model is also available in mild steel)
- Electrostatically precipitated white polyester powder coating that reduces heat buildup
- Three-point padlockable latches
- Free standing, wall mount and pole mount versions
- NEMA 3R/4X rating available (varies by enclosure)
- Sizes available for most any application



CONTROL® SOLUTIONS

- High capacity SCADA server
- Unlimited "Tag" SCADA software
- Alarm notification
- Data/reporting
- Unlimited remote-user client licenses
- Annual software maintenance licenses
- Point-By-Point system expansion capability
- Professionally managed communication and IT infrastructure
- Systemwide support backed by a century of experience
- Full system redundancy



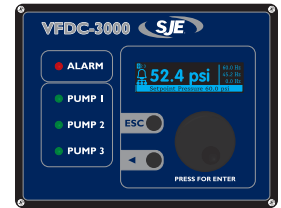
PC-3000XC

- Designed to operate up to 3 pumps
- Configurable front panel; no programming required
- Red alarm LED
- Green pump LEDs
- Multiple alternation/sequence configurations
- High visibility blue OLED backlit 64x256 pixel display
- Process/level displayed digitally and via bar graph
- Communications established indicator
- Built in pump failure detection
- Sensor failure detection with backup float switch
- User selectable process/level units
- Level simulation, I/O, and relay output status screens
- Continuous level monitoring, 4-20 mA level sensor input
- Flow monitoring (volumetric)
- Modbus communication
- Station design data



VFDC-3000

- High visibility blue OLED display 6.86 cm (2.7 inches) diagonal 64x256 pixel
- Rotary/Push button for easy menu navigation and editing
- Escape push buttons exits to main menu without saving changes
- Back arrow steps back one menu level and changing value adjustment scale
- Pump Run indicator green LEDs (3)
- Alarm indicator red LED



LEVEL VIEW™ CONTROLLER

- Duplex or triplex
- Color HMI touchscreen has ability to provide on/off level, speed control, pump alternation, flow monitoring, data logging, alarm logging and historical trending
- Continuous level monitoring
- Pump current monitoring
- Pump HOA switch monitoring
- Real time clock, level bar graph, level simulation
- Pump up or pump down applications
- Pump speed control (with VFDs)



SP6R-X

- Analog Input: 4-20mA, 14-bit, non-isolated
- Analog output: 4-20mA, 12-bit, non-isolated
- 6 programmable relay outputs with LED indication
- Normally open contacts rated 3A at 120 VAC
- 2.7" blue OLED 64x256 pixel display for process value display, relay output status indications, and program settings
- Power: 24 VDC (+/- 10%) 325mA max
- Rotary selector knob and back/escape pushbuttons give intuitive menu navigation and quick setting adjustments
- Operating Temperature: -20°C to 70°C (-4°F to 158°F)
- Process value is simulated to verify proper relay sequence operation
- Bar graph integrated into level display is scalable to represent actual level in percentage
- Serial Communication Port - RS-485 Modbus RTU designed for compatibility with Pump Watch™ Express Gateway



VPAC LSC

- No programming required
- Configurable for 1, 2 or 3 pump circuits - constant or variable speed
- Intuitive and easy-to-read Graphical User Interface
- Adjustable security, operational and alarm settings
- Open-architecture with Modbus connectivity
- Data Logging, Flows, Levels, Starts, Runs and Alarms
- Available with icontrol® cloud-based SCADA and compatible with standard alarm dialers, traditional telemetry and SCADA systems



STATION VIEW™

- 2, 3 pump control
- Transducer or float-based
- Flow and amps monitoring
- Modbus
- 24 hour data logging with seven days of historical data
 - Volume pumped
 - Number of starts for each pump
 - Run time for each pump
 - Average GPM for each pump
- Real time clock
- Password protection
- Alarm log
- Level simulation



PUMP WATCH™ EXPRESS

- Cellular-based remote monitoring for 1 or more remote sites
- Manage multiple sites; alarm notification and logging, graphic system visualization
- Li-ion backup battery for power loss notification
- SMS, email, and web portal alarm notifications
- Graphic HMI with simple status display
- View all pumping stations on an interactive map
- Data logging and historical trending
- NEW! Pump Watch Express™ iON panel
 - Expanded I/O capabilities (6 analog inputs, 16 digital inputs, 6 relay outputs)
 - Includes Pump Watch™ Express Gateway, iON module and a cable
 - NEMA 4X enclosure



DPC-4F CONTROLLER

- Configurable as duplex backup controller or as a duplex controller
- Multi-functional pump controller designed to operate two pumps
- Controller operated using inputs from 1-4 float switches
- Green LED indicators for Power On and Pump Call-To-Run
- Red LED indicator for Alarm and Backup Mode
- Amber LED indicators for Float Status
- Float out of sequence detection (Mode 4 only)
- HIGH level relay directly operated by FLOAT 4, independent of microcontroller
- 12 VDC power to float switches Relay Outputs: Pump Call-To-Run (2), Low, High, Horn/Backup



TPC-4F CONTROLLER

- Simple triplex operation
- Push button Pump Deactivation
- 4 modes:
 - Mode 1: Single float – backup (triplex)
 - Mode 2: 2-float – backup (triplex)
 - Mode 3: Pressure switches triplex pump control
 - Mode 4: 3 or 4 float triplex pump control



TPC-5F CONTROLLER

- Intelligent controller designed to operate up to 3 pumps
- Sequences pumps on/off in response to status of float switch inputs
- Configurable without any programming software required
- Multiple alternation configurations
- 3, 4, or 5 float switch operation modes with status display
- Red alarm and green pumps required LED indicators
- Intelligent pump fault, dry run and pump clog monitoring
- Demand or timed dose application



KWIKSWITCH™

- Installed directly in a wet well
- Significantly reduces installation and float switch replacement time
- (4) Quick release float switch connections
- Rated for temporary submersion
- Dual seal design for improved protection against water ingress and corrosive gases in lift stations
- Color coded wiring pairs in cable correspond to colored caps on the manifold for easy identification
- KwikSwitch™ mechanically-activated float switch
- CSA Certified, Patented
- 2-year limited warranty



MUNI™ FLOAT

- Level control in municipal applications
- Internally weighted
- 3 wire cable - SPDT (Single Pole, Double Throw) can be wired as normally open or normally closed
- Large twin wall tear drop shape design offers increased buoyancy
- Two color housing allows for easy identification of float position
- Unique gold cross-point contacts provide precision and reliable control signals up to 1 Amp
- Excellent for applications with high grease content
- CSA Certified
- 2-year Limited Warranty



PSLT-IS TRANSMITTER

- Provides continuous level monitoring in the harshest environments
- Measures hydrostatic pressure of liquid above sensor and outputs a 4-20mA signal
- Reliable low maintenance solution for critical level control applications
- Suitable for operation in Class 1, Div 1, Groups C, D, T4 hazardous locations with appropriate intrinsic safety barrier
- Rugged non-conductive transmitter housing provides superior electrical surge isolation from measured liquid
- Reverse polarity protected
- Color coded 18/2 shielded cable with vent tube
- Multiple ranges and cable lengths
- 2-year limited warranty



US Patent
8,336,385

PSLT

- Provides continuous level monitoring
- New internally-weighted design!
- Color-coded cable seal for range indication
- Transmitter wetted components are designed with nonconductive materials to provide an electrical isolation barrier
- Pressure sensor isolated from process material by a protective VITON® diaphragm
- Industry standard 4-20 mA, 2-wire loop powered
- Reverse polarity protected
- 18/2 shielded cable with vent tube
- Multiple ranges and cable lengths
- 2-year limited warranty



US Patent
8,336,385



844-4PRIMEX (477-4639)
WWW.PRIMEXCONTROLS.COM

9500393E 08/24
© 2018 SJE, Inc. All Rights Reserved.
PRIMEX is a trademark of SJE, Inc.