



# WATER AND WASTEWATER CONTROL SOLUTIONS PRODUCT SHOWCASE

[www.primexcontrols.com](http://www.primexcontrols.com)

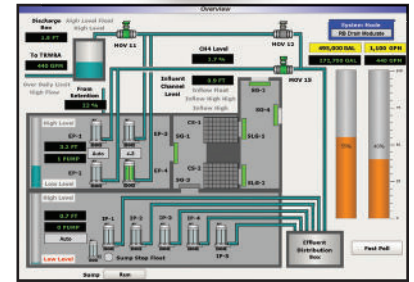
## ARC ARMOR® ENCLOSURE

- Patented enclosure design manufactured by an ISO 9000 certified company
- Reduces exposure to arc flash and arc blast with multiple compartment design and single wall construction
- Single sheet drip cap with rolled edge drip loops on free standing models
- 304L stainless steel construction (wall mount model is also available in mild steel)
- Electrostatically precipitated white polyester powder coating that reduces heat buildup
- Three-point padlockable latches
- Free standing, wall mount and pole mount versions available
- NEMA 3R/4X rating available (varies by enclosure)
- Sizes available for most any application



## ICONTROL® SOLUTIONS

- High capacity SCADA server
- Unlimited "Tag" SCADA software
- Alarm notification software
- Data/reporting software
- Unlimited remote-user client licenses
- Annual software maintenance licenses
- Point-By-Point system expansion capability
- Professionally managed communication and IT infrastructure
- Systemwide support backed by a century of experience
- Full system redundancy



## 331 PANEL (I.S. MODEL)

- 3 phases, 3 voltages, 1 panel
- Padlockable wall mount NEMA 4X stainless steel enclosure
- White painted steel inner door and backplate
- IEC HP rated motor starter with adjustable "fit and click" class 10 ambient compensated overloads
- 10HP max @208VAC, 240VAC
- 20 HP max @480VAC
- Pump short circuit disconnect/overload reset through inner door
- DPC-4F controller
  - Pump sequence
  - Pump selector switch (Alt, 1-2, 2-1)
  - Pump lag delay time adjustable (0-60 sec)
  - High water & float out-of-sequence alarms
- Dual Seal fail module, adjustable 0-250k
- Hand-Off-Auto selector switches 22mm
- Pump Run (green) LED indicators, ETM's
- Auxiliary contacts
- 4-channel Intrinsically Safe relay (I.S. models only)



## 331-SV PANEL

- 3 phases, 3 voltages, 1 panel
- Padlockable wall mount NEMA 4X stainless steel enclosure
- Single-point power connection
- IEC HP rated motor starter with adjustable "Fit and Click" overload modules
- 10HP max @ 208V, 240V
- 20HP max @ 480V
- Class 10 ambient compensated overload relay
- Pump short circuit disconnect/overload reset accessible through inner door
- Tri-voltage step-down control transformer
- Separate alarm/control fuses
- Override circuit to operate lag pump if lead float fails
- Station View™ Controller
- Pump run lights, Hand-Off-Auto switches
- Optional Level Sensor Kits
  - Submersible level transducer with (2) backup floats, 50 ft. cables
  - (4) mechanical floats with cable weights, 50 ft. cables





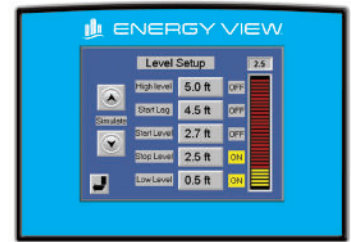
## PC-3000XC

- Designed to operate up to 3 pumps
- Configurable front panel; no programming software required
- Red LED indicates an active alarm
- Green LEDs indicate pumps required
- Multiple alternation/sequence configurations
- High visibility blue OLED backlit 64x256 pixel display
- Process/level displayed digitally and via bar graph
- Communications established indicator
- Built in pump failure detection
- Sensor failure detection with backup float switch to activate pump control override timer and alarm
- User selectable process/level units
- Level simulation, I/O, and relay output status screens to aid in setup and system troubleshooting
- Continuous level monitoring, 4-20 mA level sensor input
- Flow monitoring (volumetric)
- Modbus communication via RS-485 comm port
- Station design data



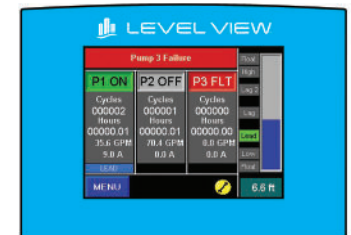
## ENERGY VIEW® CONTROLLER

- Duplex pump station controller
- Color HMI touchscreen has ability to provide level control, pump alternation, flow logging, alarm logging and historical trending
- Power monitoring
- Motor current monitoring
- Pump speed control
- Pump efficiency monitoring (W/GPM)



## LEVEL VIEW™ CONTROLLER

- Duplex or triplex pump operation
- Color HMI touchscreen has ability to provide on/off level, speed control, pump alternation, flow monitoring, data logging, alarm logging and historical trending
- Continuous level monitoring
- Pump current monitoring
- Pump HOA switch monitoring
- Real time clock
- Level bar graph
- Level simulation
- Pump up or pump down applications
- Pump speed control (with VFDs)



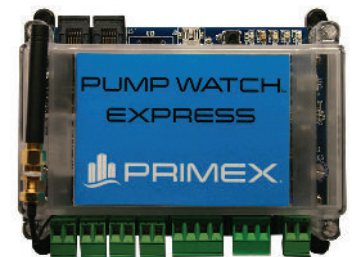
## VPAC LSC

- No programming required
- Configurable for 1, 2 or 3 pump circuits - constant or variable speed
- Intuitive and easy-to-read Graphical User Interface
- User adjustable security, operational and alarm settings
- Open-architecture with Modbus connectivity
- Data Logging, Flows, Levels, Starts, Runs and Alarms
- Available with iconcontrol® cloud-based SCADA and compatible with standard alarm dialers, traditional telemetry and SCADA systems



## PUMP WATCH™ EXPRESS

- Family of 4G LTE/3G compact cellular RTUs and gateway used for monitoring pumping systems
- Manage multiple sites; alarm notification and logging, graphic system visualization
- Li-ion backup battery for power loss detection and notification
- SMS, email, and web portal alarm notifications
- Graphic HMI with simple and clear station status display
- View all pumping stations on an interactive map
- Data logging and historical trending
- First year of service included
- Optional: web portal customization



## KWIKSWITCH™

- Designed to be installed directly in a wet well
- Significantly reduces installation and float switch replacement time
- (4) Quick release float switch connections
- Rated for temporary submersion, 6 ft. (1.8m) for 72 hours
- Dual seal design for improved protection against water ingress and corrosive gases typically found in sewage lift stations
- Single manifold multiconductor direct burial rated cable
- Color coded wiring pairs in cable correspond to colored caps on the manifold for easy identification (red-blue-yellow-white)
- Sealing plugs for unused ports
- Includes stainless steel mounting bracket
- KwikSwitch™ mechanically-activated float switch
- CSA Certified, Patented
- 2-year limited warranty



## MUNI™ FLOAT

- Designed for level control in municipal sewage pumping applications
- Internally weighted
- 3 wire cable - SPDT (Single Pole, Double Throw) can be wired as normally open or normally closed
- Wire color: Common (white), N.O. (black), N.C. (red)
- Large twin wall tear drop shape design offers increased buoyancy
- Two color housing allows for easy identification of float position
- Unique gold cross-point contacts provide precision and reliable control signals up to 1 Amp
- Excellent solution for applications with high grease content
- CSA Certified
- 2-year Limited Warranty

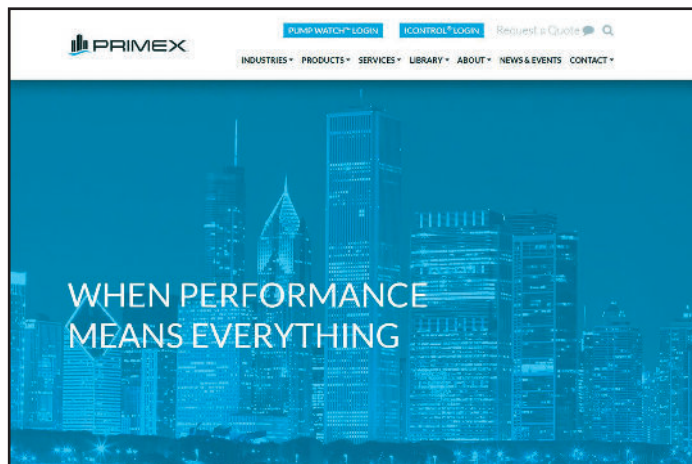


## PSLT

- Provides continuous level monitoring
- Transmitter wetted components are designed with nonconductive materials to provide an electrical isolation barrier
- Pressure sensor isolated from process material by a protective VITON® diaphragm
- Industry standard 4-20 mA, 2-wire loop powered
- Reverse polarity protected
- 18/2 shielded cable with vent tube
- Provided with removable lock in place stabilizing weight and stainless steel mounting bracket
- Multiple ranges and cable lengths
- 2-year limited warranty



For more information on PRIMEX® Control Solutions, please visit [www.primexcontrols.com](http://www.primexcontrols.com)



**PRIMEX**  
844-4PRIMEX (477-4639)  
[WWW.PRIMEXCONTROLS.COM](http://WWW.PRIMEXCONTROLS.COM)

9500393A 09/18  
© 2018 SJE, Inc. All Rights Reserved.  
PRIMEX is a trademark of SJE, Inc.