

# WATER AND WASTEWATER CONTROL SOLUTIONS



**PRIMEX**

WATER SYSTEM INTEGRATOR AND CONTROLS PROVIDER

[WWW.PRIMEXCONTROLS.COM](http://WWW.PRIMEXCONTROLS.COM)



## YOU'RE FEELING THE PRESSURE.

From water pressure to financial pressure, communities today face a growing number of challenges in providing water and wastewater services, including capital and operating budgets, infrastructure repair, replacement and expansion, staff retention and retirement, and regulatory compliance.

## MORE CONTROL. LESS STRESS.

No matter the source of the pressure, PRIMEX® offers a complete range of automation, control and remote access solutions that provide many benefits as communities and operators seek to meet these challenges.

- Reduce Operating Expenses
- Improve System Performance and Integrity
- Extend Equipment Life
- Obtain More Information for Better Decision Making







## WE PROVIDE PEACE OF MIND

Choosing the right partner for your automation and control needs will assure that you will get the maximum operational benefits and the most from your investment. Not all controls vendors and system integrators are the same.

When partnering with PRIMEX®, our clients experience the peace of mind that comes with knowing they have chosen to work with the best provider of control solutions in the water and wastewater industry. Our solutions deliver:

### **Confidence**

Our professionally designed solutions utilize the best available products and technologies and are completed on-schedule.

### **Ease of Use**

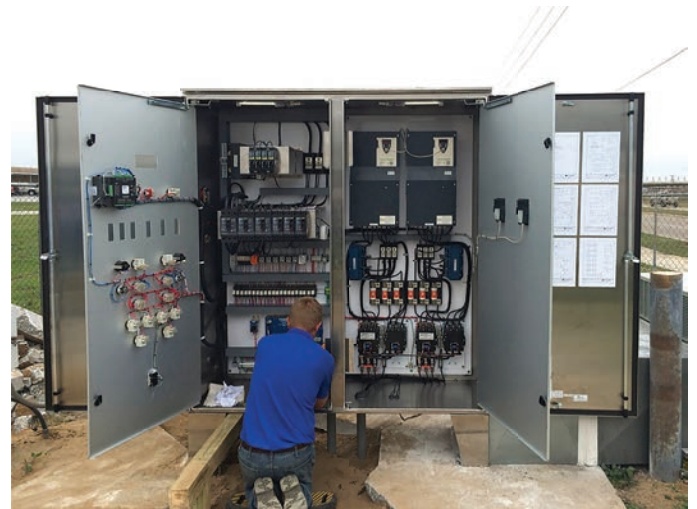
We provide solutions based on our understanding of clients' needs, which results in intuitive system operation and minimal maintenance.

### **Long-Term Support**

Our services range from start-up through field service and parts, formal maintenance programs and legacy system upgrades. All from a company that has been in the industry for decades.

### **Return on Investment**

We deliver solutions that provide the maximum operational benefits while lowering operating expenses and extending equipment life.

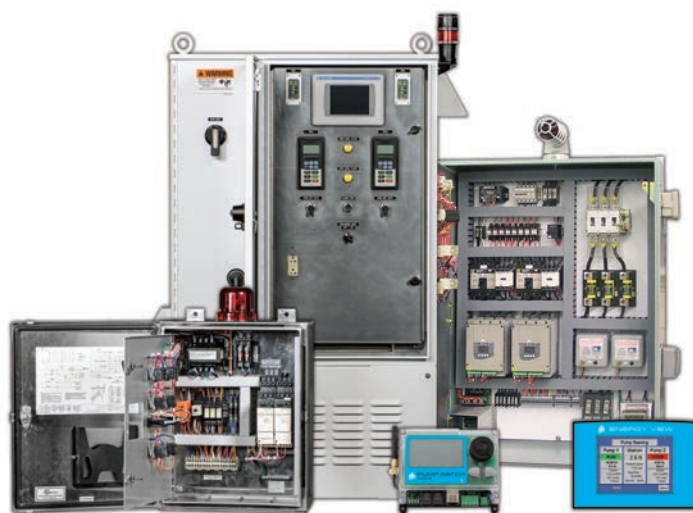






Experience matters. With nearly a century of experience and tens of thousands of simplex and complex monitoring, control and SCADA systems installed, we are a nationally recognized leader in water and wastewater automation.

Our unique position, size and extensive experience allow us to support our customers from project concept to completion. Our field service organization provides ongoing support with on demand and scheduled service/maintenance agreements to maximize your automation investment.



## APPLICATIONS

- Collection Systems
  - Sewage and Storm Lift Stations
  - Grinder Stations; CSO
- Wastewater Treatment
- Dewatering
- Water Distribution Systems
  - Pressure Booster Systems
  - Water Wells
  - Tanking Monitoring
  - Hydro-pneumatic Systems
  - Metering Stations
- Water Treatment
- Flood Control
- Irrigation Systems
- Condensate Return

## AUTOMATION CAPABILITIES

- Motor Control Centers
- Variable Frequency Drives
- Reduced Voltage Starters
- Service Entrance Rating
- Fail Safe Alarms
- PLC and SCADA Systems
- Dedicated Function Controllers
- Operator Interface Terminals
- Remote Monitoring/Telemetry
- Alarm Notification Systems
- Multiple Pump Control
- User Specified Components
- Instrumentation

## THIRD PARTY APPROVALS

- 508A Listing for Industrial Control Panels
- UL 698A Listing for Enclosed Industrial Control Panels with Circuit Extensions to a Hazardous Location
- UL NNNY Listing Class I, Division I and 2 Locations
- cUL Certification







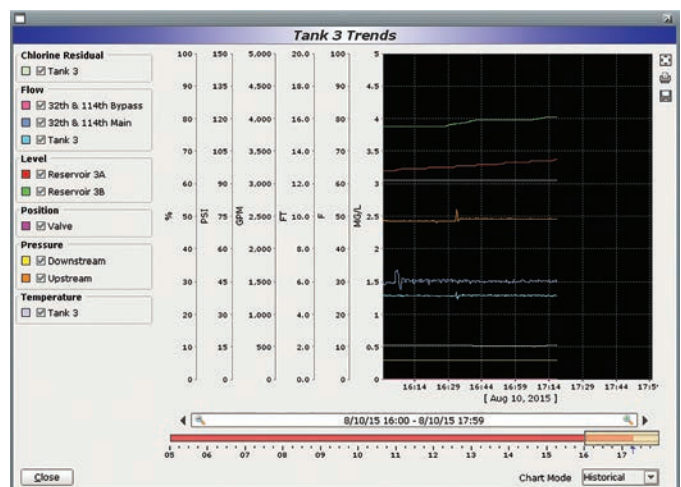
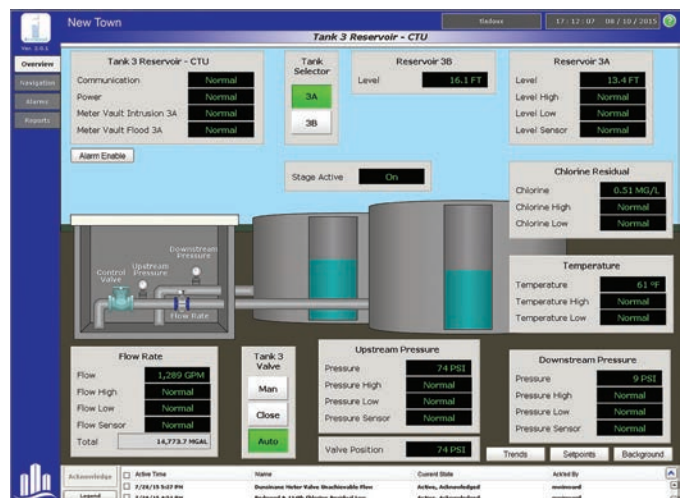
## MORE EXPERIENCE. MORE SOLUTIONS.

Our expertise covers every major automation and control technology from every major vendor.

- Programmable Logic Controllers (PLC)
- Motor Control Centers (MCCs)
- Variable Frequency Drives (VFDs)
- Supervisory Control and Data Acquisition (SCADA) and Human Machine Interfaces (HMI)

We also go beyond controls, to provide complete system integration with all related processes, equipment and data, including:

- Instrumentation
- Telemetry, networking and communications
- Database and software integration







## ENGINEERING ASSISTANCE

PRIMEX® provides customers with nearly a century of expertise and combined applied engineering and electrical controls experience using the latest technology to deliver energy efficient, cost effective products.

From concept to completion, our engineers provide:

- Suggested specifications
- Budgetary estimates
- Electrical, instrumentation and control system design
- Equipment evaluation



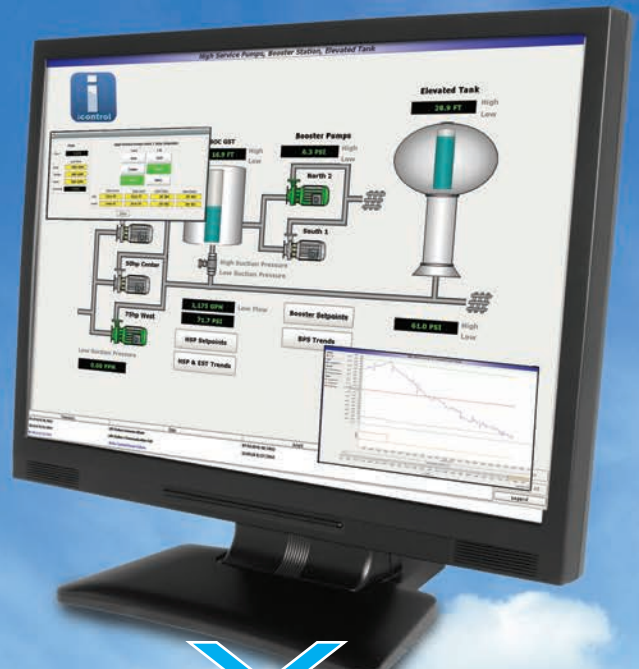
## CUSTOM CONTROLS AND SYSTEM INTEGRATION

### Total Control - from Concept to Completion

From large complex systems to small, PRIMEX® provides integration for entire processes and plants, and linked distributed systems across hundreds of remote sites. No project is too big or too complex for the PRIMEX team of professional engineers. Our talented and experienced staff provides a number of professional services.

- Accurate and timely quotations
- System design and drafting
- Controls engineering
- Detailed submittals (AutoCAD schematic wiring diagrams, enclosure layout drawings, bill of material, and more)
- Programming of PLCs, HMI, SCADA, etc.
- Panel and system fabrication (UL-listed panel shop)
- Project management
- Telemetry and Communication design
- Network and Data integration
- System testing and commissioning
- Field and maintenance services
- Exceptional technical support and training
- Free on-line engineering specifications
- Warranty as quoted

# icontrol



## CLOUD-BASED SCADA

### Affordable Control. Anytime. Anywhere.

icontrol® is the ideal solution for operators seeking all the benefits of a Supervisory Control and Data Acquisition (SCADA) system without the expense and hassle of owning and maintaining these systems.

Our cloud-based solution provides full SCADA functionality with secure remote access to your existing control infrastructure through our managed data center. There is no SCADA-related hardware, software or licensing to buy, manage or maintain.

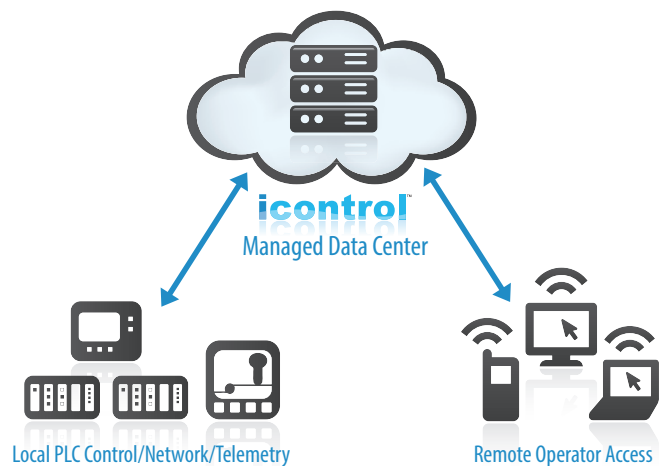
### Manage Your Operations.

icontrol is a full-featured, open-architecture SCADA platform - giving you complete control of your operations.

- Secure remote access from your office, home, or mobile device (PC, tablet, smart phone)
- Dynamic process graphics with equipment status, analog values, trend screens, etc.
- Full control of equipment and set points
- Alarm management, including remote notification and acknowledgement
- Data and reporting with graphical trends, reports and exportable data
- Maintenance scheduling with predictive and preventative tools and information

# icontrol®

solutions

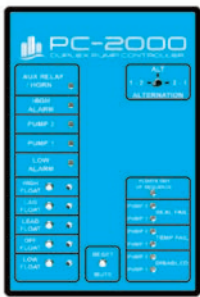






## PUMP CONTROLLERS

PRIMEX® float-based and transducer-based pump controllers incorporate features that reduce the amount of field expertise needed to operate systems for municipal and industrial water control applications, and represent the most reliable integration of engineering and manufacturing in the industry.



### PC-2000 Door Mount

- Float-based duplex
- 5 (2000) float inputs
- Alternation
- Sequence selector
- HOA; Run, Call LEDs



### PC-3000XC

- Transducer-based
- 1, 2 or 3 pump control
- LCD level display
- Sequence selector
- Telemetry/SCADA



### SP6R

- Transducer-based
- Six programmable relays
- LED and bargraph
- Multi-function display
- Status LEDs

## PUMP WATCH™ EXPRESS

- Web-based monitoring
- Cellular communications
- Multiple versions for any application
- Interfaces with "View" and PC-3000XC controllers



## PC-240

- Float-based
- Duplex or backup controller
- Alternation
- 4 MODE selector switch and operation
- Status LEDs





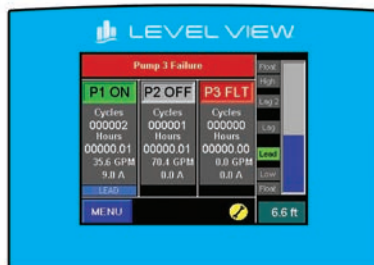


One of our greatest strengths is our expertise in the municipal water control industry. Our controllers incorporate features that reduce the amount of field experience required for operation and utilize the latest in electronic assembly. You can be sure quality is programmed into every controller.



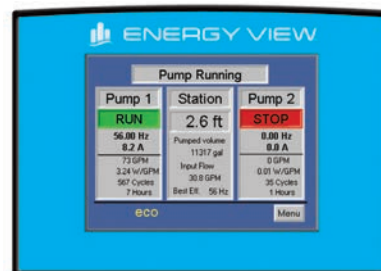
## STATION VIEW™

- 2, 3 pump control
- Transducer or float-based
- Flow and amps monitoring
- Modbus



## LEVEL VIEW™

- 2, 3 pump control
- Transducer-based
- Constant or variable speed
- Modbus

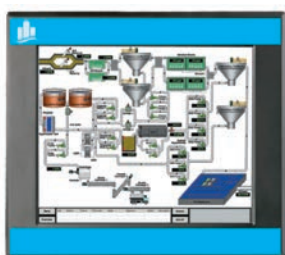


## ENERGY VIEW®

- 2 pump; uses kW logix
- Transducer-based
- Constant or variable speed
- Flow and amps monitoring
- Modbus

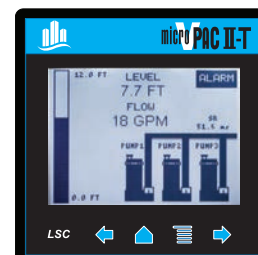
## VPAC 10/VPAC 15

- Ideal for telemetry systems
- Can be used as CTU (master) or RTU (Remote)



## MICRO-VPAC II-T LSC

- Simplex, duplex and triplex control
- Volumetric flow monitoring
- 4" or 6" color display screen
- Modbus Serial, TCP/IP
- iconrol® compatible







## EXPRESS SOLUTIONS

For jobs that require less complex control systems, PRIMEX® offers Express Solutions which are professionally designed utilizing high quality components, available at competitive prices with quick response lead times; many panels are stocked.

### 331 AND 331-SV PANEL

#### 3 Phase, 3 Voltages, 1 Panel

Simple, yet versatile duplex control panel designed for flexibility. Field install appropriate overload modules into the starter, up to 32 amps each.

- Series A version available
- Stainless steel wall mount NEMA 4X enclosure (331 also available in fiberglass)
- Single point power connection
- IEC HP rated motor starter
- 10HP max @ 208, 240V
- 20HP max @ 480V



331-SV PANEL

## HYDRO-PNEUMATIC TANK CONTROL (HTC)

Micro-VPAC II application solution for small water systems and upgrades for Healy-Ruff Roto-Mag controls.

- Affordable “packaged” solution
- Simplex, duplex and triplex pump applications
- Easy to install and set up



HYDRO-PNEUMATIC TANK CONTROL (HTC)





## PREMIER SOLUTIONS

We have the expertise to design and build robust control systems for sanitary sewer, storm water, water well, booster and other applications, no matter how complex.

Our Premier Solutions include the patented multi compartment Arc Armor® system which reduces operator exposure to arc flash. ECO Smart Station® energy efficient control panels are also offered.



### Power Equipment:

- Service entrance rating
- Auxiliary power inlets and connections
- Power quality monitoring
- Lightning arrestors
- Transfer switch gear
- Voltage/current meters
- Transient voltage surge suppression/filtering
- Surge capacitors

### Motor Control:

- Across the line starters (NEMA, IEC, manual)
- Reduced voltage starters
- Variable Frequency Drives (VFDs)

### We program and support every major Programmable Logic Controller and Operator Interface Terminal manufacturer:

- Allen Bradley
- Telemechanique
- Siemens
- General Electric
- Modicon and more

### Complete SCADA Package Solutions:

- Computer with SCADA software with custom graphics and animation and data logging
- Communication equipment





## ABOUT PRIMEX®

PRIMEX®, the SJE-Rhombus® Engineered Solutions Team, dedicated to water and wastewater control is the largest provider of complete control solutions for water applications in North America, offering a broad end-to-end suite of products and services, including standard pump control panels, full-feature, web-hosted iconcontrol® SCADA solutions and highly complex system integration projects for large municipalities.

With thousands of installations across North America, nearly a century of expertise and hundreds of years of combined engineering and electrical controls experience, PRIMEX provides control solutions for municipal and industrial process water applications using the latest technology to deliver energy efficient and cost effective systems carrying UL 508A, UL 698A, UL NNY and other approvals as specified.

Multiple design and production facilities located across North America ensure PRIMEX customers seamless, high quality water control solutions. PRIMEX employee-owners offer fast turnaround on quotes, submittals and delivery, while maintaining high standards for quality. Investing in research, new product development and testing are core PRIMEX values. PRIMEX is continually designing innovative control solutions to meet the growing demands of the water control industry.



We're proud to be an active supporter of these industry associations:



# PRIMEX®

844-4PRIMEX (477-4639)  
WWW.PRIMEXCONTROLS.COM

9500127B  
© 2017 SJE Rhombus® Rev 04/18  
PRIMEX is a trademark of SJE