

PROCESS PRO™

PROGRAMMING ARCHITECTURE

PRIMEX®, an industry leading controls manufacturer, offers Process PRO™, a programming architecture designed for water systems. Process PRO's Wise family of powerful Integration Modules transform tasks into highly configurable systems.

SUPERIOR PROJECT DEVELOPMENT

World Standard IEC61131-3 compliant programming

- Tag based addressing allows efficient development
- PLC programming languages process control engineers use: Ladder, Structured Text, SFC, CFC, IL, FBD
- Tightly integrated PLC and HMI applications

Water process specific modular programming

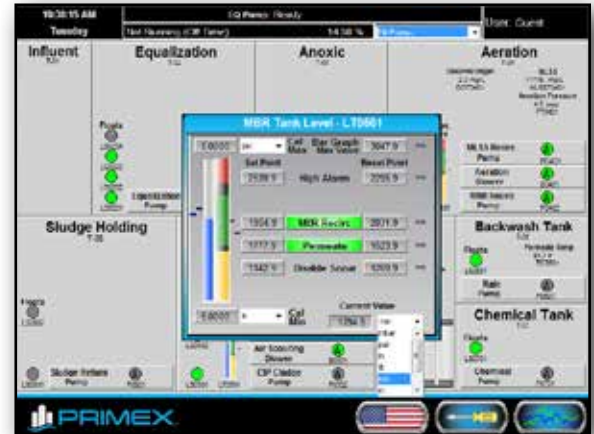
- Robust time and test hardened core code
- Reduced lead time and cost
- Smoother startups
- Faster field changes

Enhanced functionality

- Internet access for control, monitoring and data acquisition
- User access security
- Real time units selection/conversion
- Language selection
- Cascaded (multi-stage) PID process controls

Complete family of Wise integration modules

- Filter Wise™
- RO Wise™
- CIP Wise™
- DAF Wise™
- SBR Wise™
- MBR Wise™
- MBBR Wise™



EASE OF OPERATION



ADVANCED FUNCTIONALITY

**PRIMEX offers customized control systems.
Let us apply Process PRO™ to
power your specific applications!**



844-4PRIMEX (477-4639)
WWW.PRIMEXCONTROLS.COM

Ashland, OH 800-363-5842
Clearwater, FL 800-349-1905
Detroit Lakes, MN 888-342-5753
Milford, OH 513-831-9959