

PUMP WATCH™

WEB-BASED CELLULAR REMOTE MONITORING

FC ID R17GC864Q2



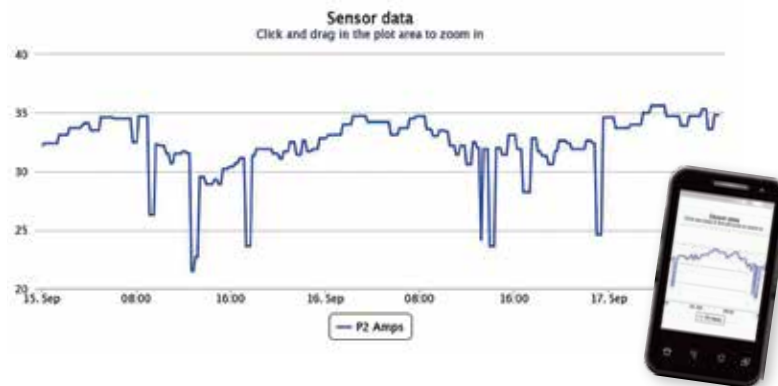
OVERVIEW

Designed for municipal wastewater lift stations and similar applications, the Pump Watch™ is a simple and effective tool for management of a wastewater collection system via a cellular network. Alarms are monitored and service personnel notified in the event of a failure.

Data logging and trending of critical information enables the user to visually track system performance and recognize impending problems. The station data can be visualized in a simple and intuitive way from your web browser on a PC, tablet or smart phone.

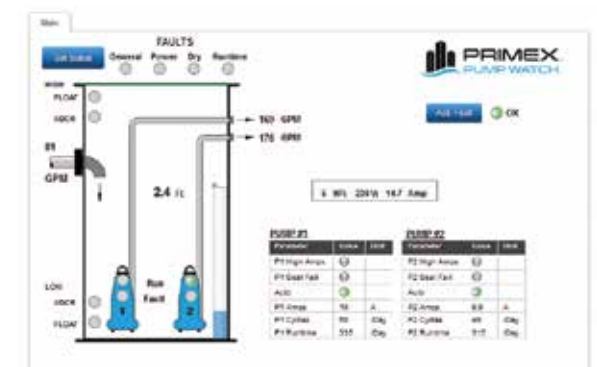
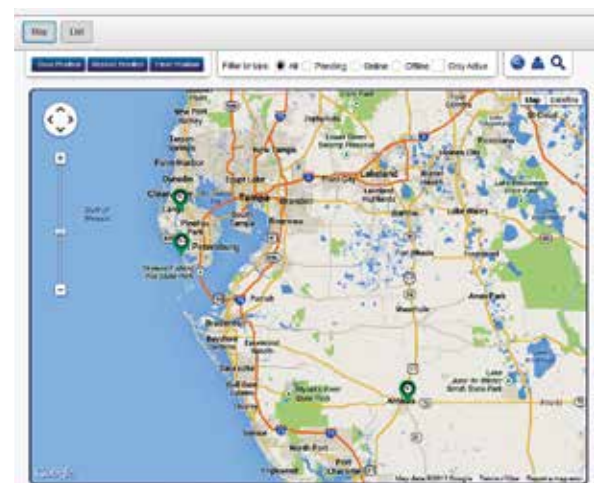
ALARM NOTIFICATION

Alarm notifications are sent via email and text messaging. Users can monitor the station data and historical trending on the website at any time.



FROM THE WEB

Easy visualization of the pump station's critical parameters.



844-4PRIMEX (477-4639)
WWW.PRIMEXCONTROLS.COM

Ashland, OH
Clearwater, FL
Detroit Lakes, MN
Milford, OH

800-363-5842
800-349-1905
888-342-5753
513-831-9959

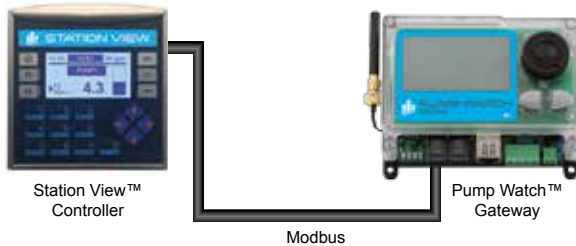
PUMP WATCH™

WEB-BASED CELLULAR REMOTE MONITORING



PLUG AND PLAY

When using select PRIMEX® pump controllers, Pump Watch™ can be connected via Modbus. There is no I/O wiring required; the data monitored by the pump controller is made available to the Pump Watch™ remote monitoring unit.



MONITORING

- Pump Data - HP, Voltage, FLA
- Station In-flow (GPM)
- Wet Well Level (Ft.)
- Pump Amps (Pumps 1, 2, 3)
- Pump GPM (Pumps 1, 2, 3)
- Pump Starts/24 hrs. (Pumps 1, 2, 3)
- Pump Run Time/24 hrs. (Pumps 1, 2, 3)
- Pump Running (Pumps 1, 2, 3)
- Pump Fault (Pumps 1, 2, 3)
- Pump In Auto (Pumps 1, 2, 3)
- Pump Dry Run Fault
- Power Fail
- General Station Fault
- High and Low Level Alarms (Transducer)
- High and Low Float
- Pump Run Time Fault

PART NUMBERS

- | | |
|---------|--|
| 1039625 | Pump Watch™ Gateway with 3dB antenna, CDMA |
| 1038249 | Pump Watch™ Retro panel with 3dB antenna, battery backup, CDMA |
| 1038899 | Optional high gain antenna with 40' cable |

Control:

- Remote horn silence

CELLULAR NETWORK

Pump Watch™ uses the Verizon CDMA network (national coverage; GSM also available). The supplied antenna is adequate for most locations. A high gain antenna is available for remote areas with weak signal strength.

PUMP WATCH™ RETRO

The **Pump Watch™ Retro** (shown at right) is designed for retrofit or upgrade to existing lift station control panels. It comes in a NEMA 4X non-metallic enclosure designed for outdoor installations. A 24 hour battery backup with charger is included.



Pump Watch™ Retro Shown